



Harold View, Leeds, LS6 1PP

£1,100 Per Calendar Month
Available from: 1st July 2024



<https://www.sugarhouseproperties.co.uk>

Property Details

Full Description

If you are looking for a high standard two bedroom property then look no further!

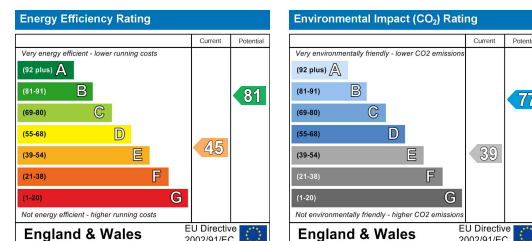
Offering two double bedrooms, each with their own floor, a fully tiled bathroom and open plan kitchen/living space, whats not to love?

Call now!

Key Property Features

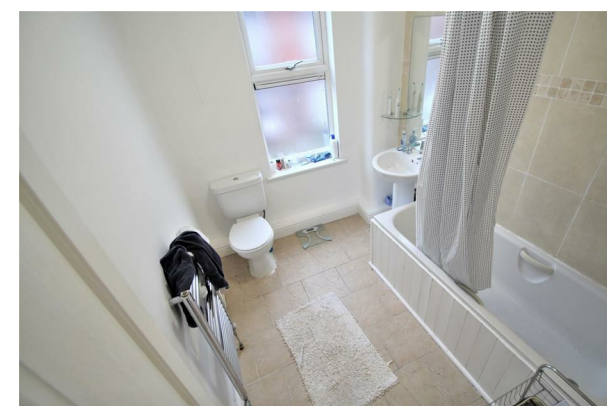
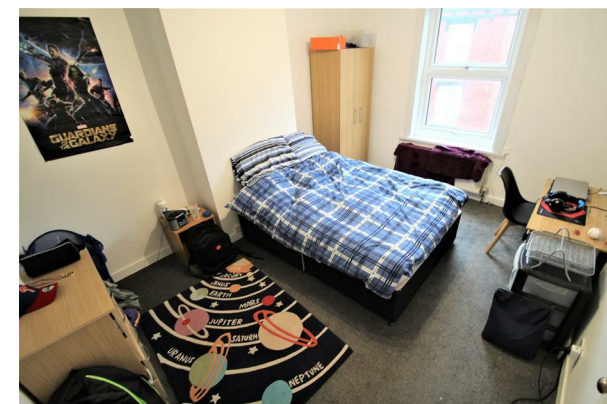
- Modern Interior
- Close to Uni
- Bedrooms on Separate Floors
- Prime Central Hyde Park Location
- Modern Bathroom
- Close Proximity to Takeaways
- Good Transport Links
- Close to Burley Park
- Spacious Bedrooms
- Council Tax Band A

Energy Efficiency Graph



Interested? Get in touch

Please contact us on 0113 8160131 or email lettings@sugarhouseproperties.co.uk if you wish to arrange a viewing appointment for this property or require further information.



These particulars, whilst believed to be accurate, are set out as a general outline for guidance only. If in the event, any error or omission made in these particulars, the Agent or Landlord cannot be held liable as this is brochure is for information only.

0113 816 0131

Sugarhouse (Leeds) Ltd
Registration Number 7594132 VAT Number 252251053
Registered Office 47 Headingley Lane, Headingley, Leeds LS6
Place of Registration England and Wales

www.sugarhouseproperties.co.uk [/sugarhouseproperties](https://www.facebook.com/sugarhouseproperties) @Sugarhouseleeds